


AREA URBANA			
PONTO	LAT	LONG	MUNICIPIO
T14TC3_E	18°51'45.02"S	41°56'43.18"O	GOVERNADOR VALADARES
T14TC3_IL_E	18°51'47.76"S	41°56'39.75"O	GOVERNADOR VALADARES
T14TC3_IL_D	18°51'59.97"S	41°56'24.93"O	GOVERNADOR VALADARES
T14T2_E	18°52'37.31"S	41°57'10.66"O	GOVERNADOR VALADARES
T14T2_D	18°52'49.27"S	41°56'52.39"O	GOVERNADOR VALADARES
T14TC4	18°51'29.95"S	41°56'16.63"O	GOVERNADOR VALADARES
T14TC5	18°50'59.93"S	41°56'0.14"O	GOVERNADOR VALADARES
T14TC31	18°54'12.30"S	41°58'58.93"O	GOVERNADOR VALADARES

PONTO DE COLETA

ÁREA URBANA_GOV. VALADARES

Legenda

 Ponto de Coleta

Vila dos Montes

Cidade Jardim

T14TC31

Google Earth

© 2020 Google

Image © 2020 Maxar Technologies


900 m

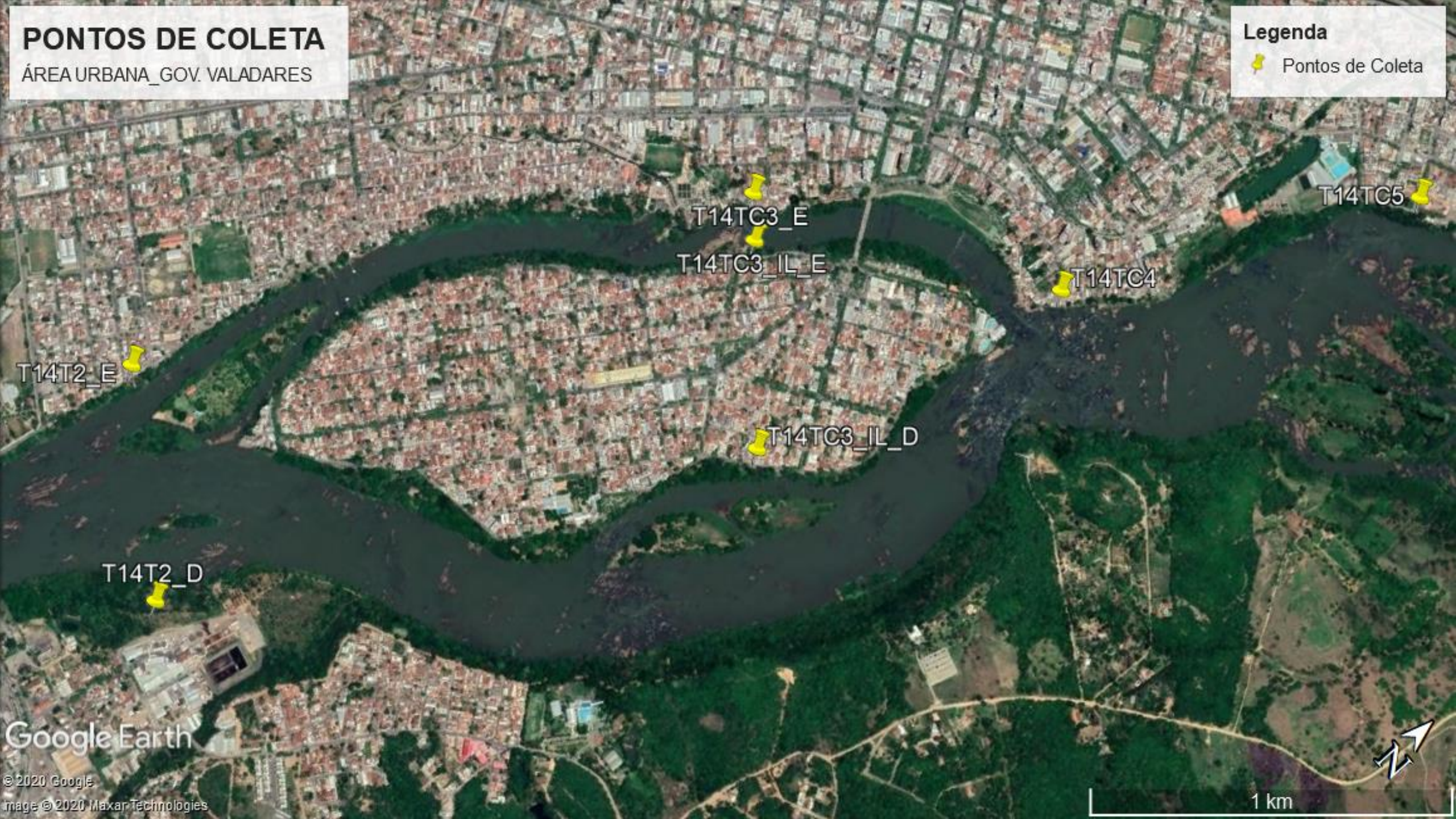


PONTOS DE COLETA

ÁREA URBANA_GOV. VALADARES

Legenda

 Pontos de Coleta



Google Earth

© 2020 Google

Image © 2020 Maxar Technologies

1 km